



Thinkspace Art Gallery
6009 Washington Blvd.
Culver City, CA 90232
(310) 558-3375

Open Wed. - Sat.
Wed - Fri 1PM-6PM
Sat 1PM-8PM
contact@thinkspacegallery.com

| Blog | Exhibitions | Artists | Inventory | Prints | Press | About |
|--------------------------|-------------|---------|-----------|--------|-------|-------|
| Subscribe to newsletter: | | | | | | GO |



Thinkspace presents:

Andy Kehoe "The World Unseen and Those In Between" (main gallery)

Jesse Hotchkiss "Learning To Fall" (project room)

Dabs Myla "Earthquake Weather" ("Fresh Faces" series)

Opening Reception: Friday, Dec. 11th 7-11PM

On View: Dec. 11th, 2009 – Jan. 2nd, 2010

***Please note: all artists will be attending the opening reception**

(Los Angeles, CA) Thinkspace is proud to present 'The World Unseen and Those In Between', the second solo show at our gallery from Portland based artist Andy Kehoe. This will be the first solo exhibition with the artist in our main gallery space, following 'Into the Forest of Broken Dreams, which took place in our project room in the fall of 2007. 'The World Unseen and Those In Between' marks Kehoe's biggest west coast exhibition to date.

This new series of oil and acrylic paintings on wood panel serve as an outlet for the artist to express his feelings of unrest and anxiety in this all too unstable world we live. Kehoe's soft and enticing palette of autumnal colors provides the foundation for his work and allows the artist to explore his world view via the sincere human emotion that's so prevalent in his timeless works. The beautiful yet desolate landscapes present in much of his work serve to capture the essence of human loneliness and the longing for a simpler time. Viewing his characters in their allegorical compositions brings one to think of how tiny we truly are compared with the vastness of mothernature. Much like the comics of his youth, Kehoe's work is rich with undertones of unease and violence, yet this is all somehow masked by the artist's talent for creating seemingly peaceful and serene scenes set in nature that hint at the mysteries of the unknown.

Of the show's titles, the artist goes on to explain: "The World Unseen is a place where the spirits of the dead, the never living and the yet to be all reside. This world lies unnoticed to the living yet each world shapes the other. The thinnest of curtains separate the worlds and they perpetually intertwine and overlap. Some live between both worlds and are neither living nor dead, but something more fantastic and in some cases all the more horrible."

Opening in conjunction with 'The World Unseen and Those In Between' is our second solo show with artist and professional skateboarder Jesse Hotchkiss. In Jesse's new series, he aims to portray moments of dreamlike intimacy, both visually foreign and familiar, yet somehow comforting and empowering to the characters within his work. In addition to the new works from Jesse Hotchkiss, we will also feature a small selection of new collaborative paintings from Melbourne, Australia based artist duo Dabs Myla as part of our 'Fresh Faces' series this December in our project room.

**Opening Friday, December 11th in our main gallery:
Andy Kehoe 'The World Unseen and Those In Between'**



Bio:

Andy Kehoe was born and bred in the city of steel, Pittsburgh, PA. The artist now spends most of his days painting away in the attic of his new home located in the lush green surroundings of Portland, OR. The artist was bred on comics from an early age, finding an escape of sorts in the over stylized violence found within their delicate pages. Kehoe now fondly looks back on the endless hours he spent absorbing all the storybooks and comics he could lay his hands on, all the while doodling away on any scrap of paper within his reach. His paintings pull from these memories and are rich with a childlike innocence that recall a simpler time before the age of machines and big business.

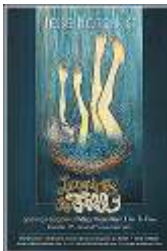
Shortly after graduating from high school, Kehoe explored a number of different art schools before settling in to the illustration course at Parsons School of Design in NY. After dabbling in commercial illustration for a short time, Kehoe decided it was time to focus on his personal work, and he's never looked back.

Kehoe's work has shown the country over including such prestigious galleries as Jonathan LeVine (New York City), Nucleus Gallery (Los Angeles), Black Maria Gallery (Los Angeles), and Copro Gallery (Santa Monica, CA), as well as taking part in the Gen Art Vanguard Contemporary Art Fair during Art Basel 2008 in Miami, FL.

Artist website: www.andykehoe.net

Sneak Peek of Andy's work for 'The World Unseen and Those In Between':
<http://www.flickr.com/photos/thinkspace/sets/72157622702198396/>

**Also opening on Friday, December 11th, in our project room:
Jesse Hotchkiss 'Learning To Fall'**



Bio:

On the first day of June, 1976, Jesse Hotchkiss was brought into this world inside a dance studio to bohemian parents in San Francisco's SOMA district. Though strongly influenced by his parents love for theatre and dance, Jesse's more introverted nature led him on a path to visual arts. In addition to art, skateboarding was a passion that balanced his mind between the worlds of physicality and imagination. The overlapping values of these art forms blessed him with a strong confidence in his creative abilities. Along with early exposure to works by Matisse, Dali and Schiele, Jesse was also captivated by the raw power of graffiti art. His introduction to graffiti happened while living in Santa Fe, NM. There he became strongly connected to the natural environment and muted palette of the southwest. Guided by these inspirations, and the strength to invent, he has forged a highly distinctive style. He combines intricate stenciled images, subtle textures and whimsical explorations in figure and form to portray moments of dreamlike intimacy, both visually foreign and familiar.

Jesse has exhibited his work in Australia, Japan, Hawaii, New York, New Mexico and along the coast of California.

Artist website: www.jessehotchkiss.com

Sneak Peek at works featured this December in our project room:
<http://www.flickr.com/photos/thinkspace/sets/72157622577857003/>

**PLUS on our 'Fresh Faces' wall this December:
Dabs Myla 'Earthquake Weather'**



Bio:

Dabs is a prolific illustrator and graffiti artist who spent his teenage years growing up in Melbourne in the Early '90s. The graffiti scene influenced him greatly in his style and technique. These days Dabs' characters come to life in more contextualized environments than ever before, whether they are painted on walls in the streets, or on canvases for a gallery setting.

Myla was also raised in Melbourne where she was obsessed with detailed painting and drawing from an early age. Throughout her life Myla has continued to develop her artistic ways, and now concentrates on detailed cities and landscapes. Three years ago, along with Dabs, they combined forces to solely collaborate on their works together.

The duo's work has shown the world over including such high profile shows as this November's 'Golden Age' show in downtown Los Angeles as well as the recent Green Day 21st Century Breakdown show that took place in the UK at Stolen Space and was curated by fellow artist Logan Hicks.

Dabs Myla currently live in Hollywood, Los Angeles, spending everyday working on artworks, painting walls and being influenced by the wonders of their new city.

Artist website: www.dabsmyla.com

Sneak Peek at 'Earthquake Weather':
<http://www.flickr.com/photos/thinkspace/sets/72157622577853847/>

| | | | |
|--|------------------------|---|-------------------------|
| Facebook | Flickr | Twitter | YouTube |
| Copyright © 2005-2012 by Thinkspace Gallery . | | Web Development by Kussner . Website Hosted by Media Temple . | |